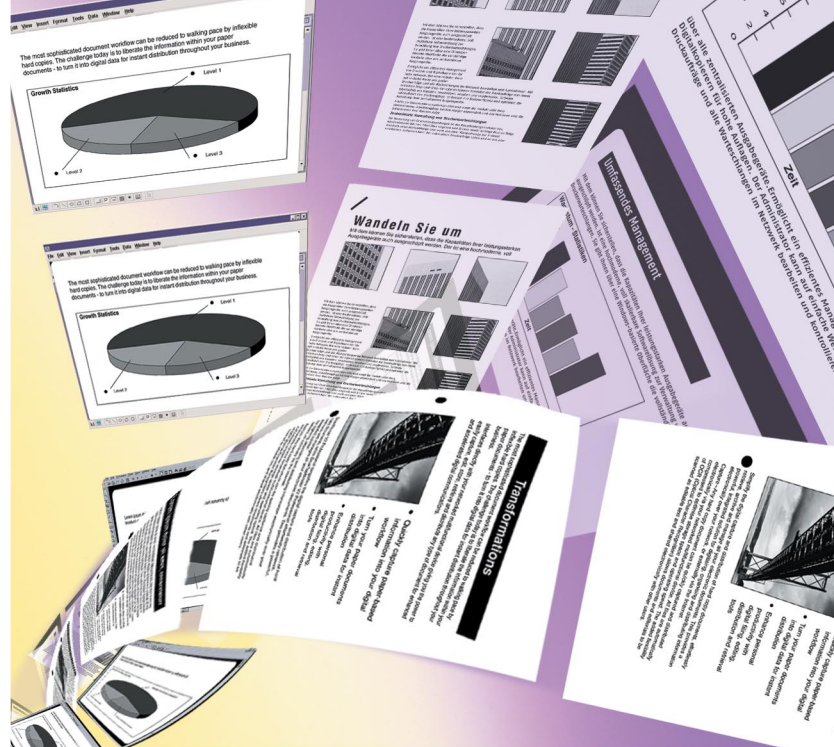


# DeskTopEditor for Production

*Transform your  
documents into  
high quality output*

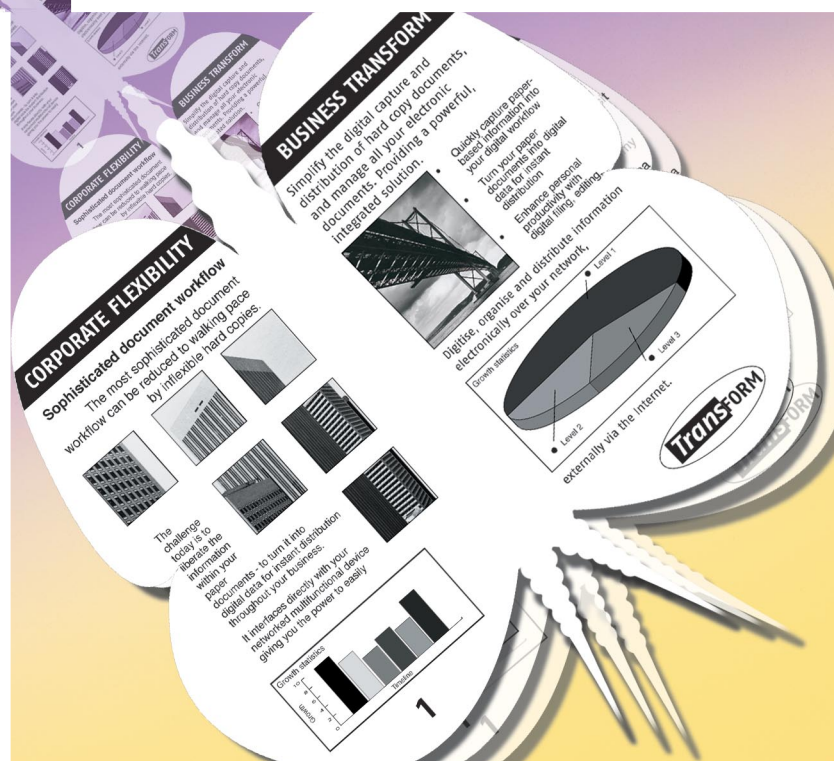


- Achieve professional, high quality results with the intuitive user interface
- Quickly edit multiple sourced pages simultaneously for increased productivity
- Highly flexible and functional to cope with your high volume workflow

In today's demanding, high volume environments the need for a productive and flexible document editing Software Solution is necessary. The ability to transform your paper based originals into high quality, professionally finished documents gives you that extra edge throughout your business communications.

DeskTopEditor for Production is designed to work with the Nashuatec 9005/10515 high volume multifunctional machines, offering you the capability of reaching new heights of productivity. With its intuitive interface you are able to capture, edit, manage and output highly professional documents.

**nashuatec**  
Total Document Solutions



# DeskTopEditor for Production

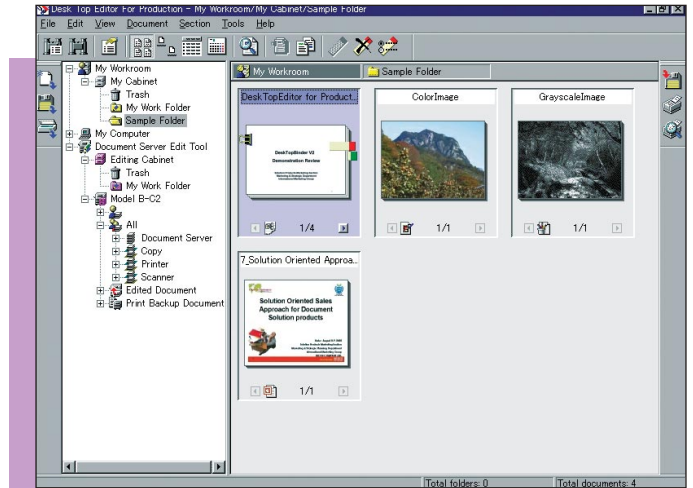
DeskTopEditor for Production's flexibility, effortlessly covers your entire workflow from input of hard copy and digital documents, through editing, to output. Working in conjunction with the Nashuatec 9005/10515 DeskTopEditor for Production provides a manageable, integrated solution for you to get the most out of your business documents.

## How does it work?

- Capture** – You can capture hard copy documents along with digital copies from various source applications with ease. Combined with the file format converter you will be able to quickly and easily retrieve files to your DeskTopEditor for Production workstation, edit them and store back on the document server for instant print on demand. OCR conversions give added flexibility, allowing documents to be scanned and converted into editable text.
- Edit** – Using DeskTopEditor for Production's powerful and intuitive editing functions, documents can be manipulated to a high degree. The quality of your documents can be improved using various options such as de-skew, remove punch holes and change size along with company logos and page numbers. To increase productivity manipulation options can be applied simultaneously to the whole document.
- Manage** – DeskTopEditor for Production gives you greater control over the management of your documents. Productivity is taken to a new level with the Auto Document Link facility which automatically notifies you of new files arriving to nominated folders, saving valuable time.
- Output** – Using DeskTopEditor for Production in conjunction with the Nashuatec 9005/10515, your finished documents can be quickly accessed and output to a highly professional level. When all editing has been completed the document can either be sent to print or saved with preset print settings for future use, giving you professional, high quality output.

**DeskTopEditor for Production is a perfect complement to your networked multifunctional device. DeskTopEditor for Production offers you flexibility and quality enhancing features, increasing the productivity of your high volume workflow.**

**Together with dedicated hardware, expert consultancy and professional service, DeskTopEditor for Production is a perfect example from our range of tailor-made solutions for today's demanding document editing needs.**



*Capture, edit, combine and output through DeskTopEditor for Production*



Specifications DeskTopEditor for Production	
<b>System Requirements</b>	
Main unit	IBM PC/AT compatible
Display	800 x 600 pixels or higher (1,024 x 768 pixels or more recommended) 64k colours or higher recommended
OS	Windows® 98/Windows® 98 Second Edition/Windows® Me Windows® NT4.0 Workstation/Server (SP6a or later) Windows® 2000 Professional/Server (SP2 or later) Windows® XP Home Edition/Professional
CPU	Intel Pentium III 600MHz or faster recommended (Pentium III 2GHz or faster recommended for editing multi-bit images)
RAM	256MB or more (512MB or more recommended for editing multi-bit images)
HDD	50MB of free disk space is required for the program 200MB or more free disk space recommended for saving documents (depending on users)
<b>Hardware Requirements</b>	
Printer/scanner option or printer controller EB-105EX	
File format converter	

We reserve the right to make amendments to the technical specifications and external appearance of this software. Please note that the full range of options shown in this publication may not always be available. All brand and product names are recognised, and hereby acknowledged, as registered trademarks of their respective owners.

[www.nashuatec.com](http://www.nashuatec.com)